



jordan fishwick

FALLOWFIELD
Victoria Road



Victoria Road, Fallowfield, M14 6DA

£460,000



The Property

INVESTMENT OPPORTUNITY, CURRENTLY LET TIL JUNE 2026 at £2709pcm excluding bills. An extended and spacious five bedroom fully licenced semi detached property currently let to five individuals, located close to the the centre of Fallowfield village and with excellent transport links, the property is well placed for local amenities and universities. Comprises: Entrance hall, double bedroom, lounge/dining room/kitchen further double bedroom and shower room. To the first floor: three double bedrooms, single bed (not let) and bathroom. Paved driveway to the front and side whilst to the rear there is a brick built annex (not let) with lounge/bedroom, kitchen and shower room with the potential to add further income.

Directions

M14 6DA



- Five bedroom semi detached
- Currently let till July 2026
- Producing £32,500pa with potential to increase
- Detached brick built annex
- Two shower rooms
- Ample off road parking
- Great Location
- Fully licenced

Postcode - M14 6DA

EPC Rating - D

Floor Area - 1264.00 sq ft

Local Authority - Manchester City Council

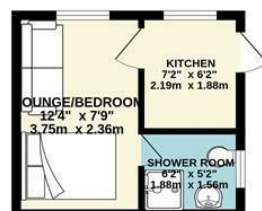
Council Tax - C



GROUND FLOOR
758 sq.ft. (70.4 sq.m.) approx.



1ST FLOOR
506 sq.ft. (47.0 sq.m.) approx.



TOTAL FLOOR AREA : 1264 sq.ft. (117.4 sq.m.) approx.
Measurements are approximate. Not to scale. Illustrative purposes only.
Made with Metropix ©2020



These particulars are believed to be accurate but they are not guaranteed and do not form a contract. Neither Jordan Fishwick nor the vendor or lessor accept any responsibility in respect of these particulars, which are not intended to be statements or representations of fact and any intending purchaser or lessee must satisfy himself by inspection or otherwise as to the correctness of each of the statements contained in these particulars. Any floorplans on this brochure are for illustrative purposes only and are not necessarily to scale.

Offices also at: Wilmslow, Macclesfield, Hale, Sale, Chorlton, Glossop, Manchester & Salford

757-759 Wilmslow Road, Didsbury Village, Manchester

0161 445 4480

didsbury@jordanfishwick.co.uk
www.jordanfishwick.co.uk